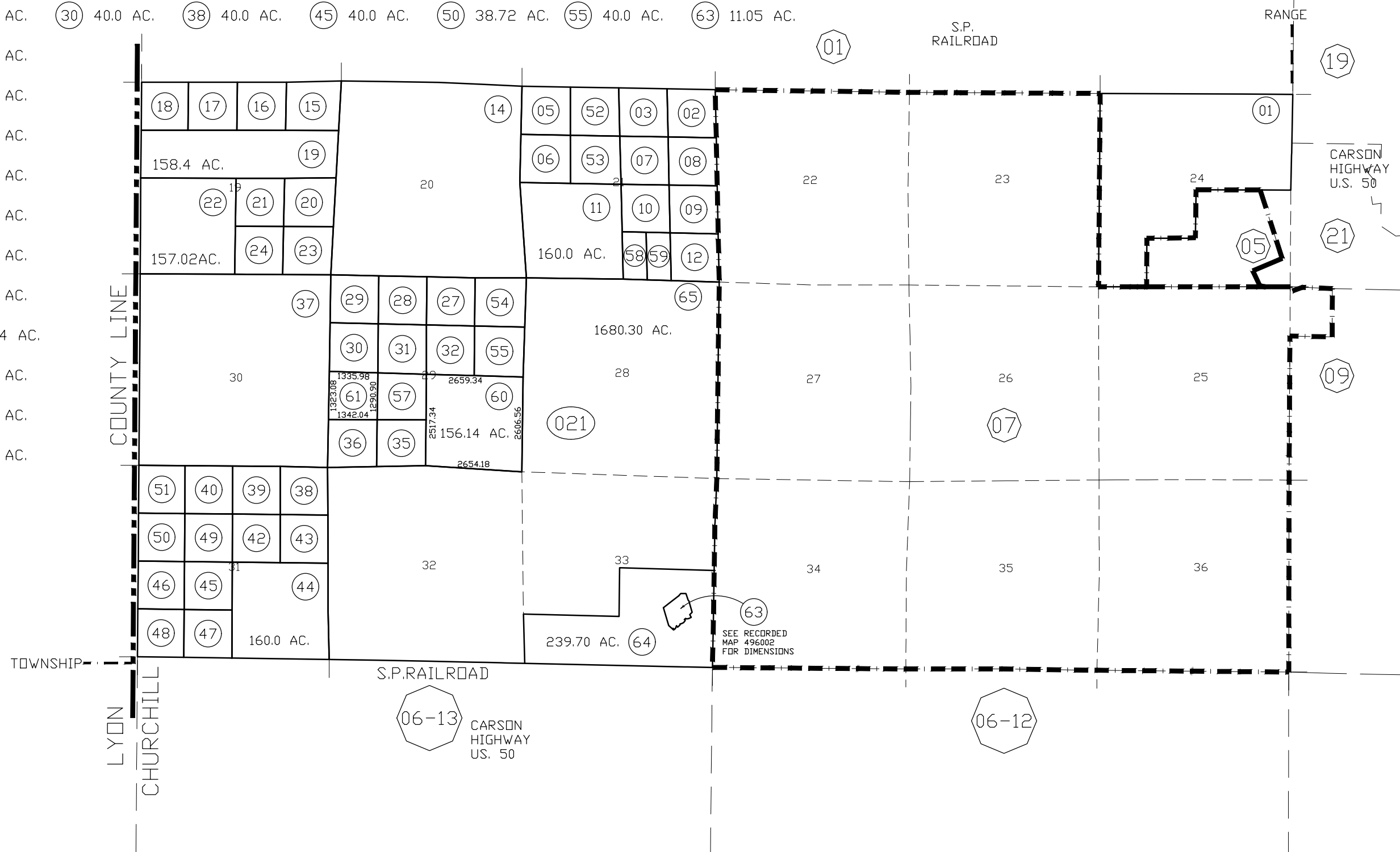




- (02) 40.0 AC.    (24) 40.0 AC.    (31) 40.0 AC.    (39) 40.0 AC.    (46) 38.62 AC.    (51) 38.82 AC.    (57) 40.0 AC.
- (03) 40.0 AC.    (27) 40.0 AC.    (32) 40.0 AC.    (40) 40.0 AC.    (47) 40.0 AC.    (52) 40.0 AC.    (58) 19.85 AC.
- (05) 40.0 AC.    (28) 40.0 AC.    (35) 40.0 AC.    (42) 40.0 AC.    (48) 38.52 AC.    (53) 40.0 AC.    (59) 19.91 AC.
- (06) 40.0 AC.    (29) 40.0 AC.    (36) 40.0 AC.    (43) 40.0 AC.    (49) 40.0 AC.    (54) 40.0 AC.    (61) 40.17 AC.
- (07) 40.0 AC.    (30) 40.0 AC.    (38) 40.0 AC.    (45) 40.0 AC.    (50) 38.72 AC.    (55) 40.0 AC.    (63) 11.05 AC.



SCALE CORRECT WHEN ON 11" X 17" PAPER.  
THE LINE BELOW THIS TEXT IS 1 INCH IN LENGTH.

VARIOUS SECTION

26 E. RANGE

19 N. TOWNSHIP

NOTE: This plot is for assessment use only and does not represent a survey. No liability is assumed as to the accuracy of the data delineated hereon. Use of this plot for other than assessment purposes is definitely not recommended and Churchill County expressly disclaims any liability for use other than for assessment purposes.

**LEGEND**

ZONING   

ELLIPSE  

BRACKET  

PARCEL #  

ROAD     

EASEMENT  

ZONE  
VARIOUS

LAST REVISED:  
JUNE 2, 2022

STATE OF NEVADA  
COUNTY OF  
CHURCHILL  
REVISED BY:  
ASSESSOR

FISCAL YEAR  
2022/2023

**1" = 3000'**  
WHEN ON 11" X 17" PAPER.

**07-02**